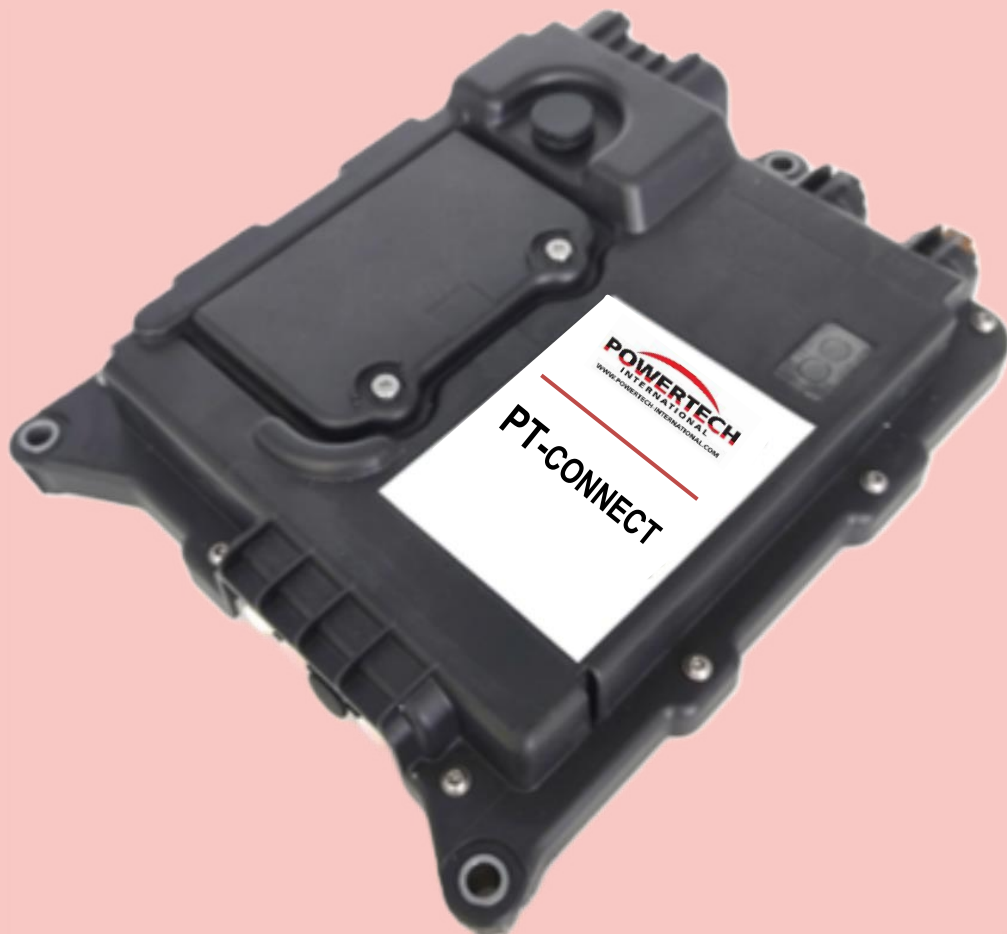




PT-CONNECT SYSTEM Datatransfer Module



PT-CONNECT is designed to monitor our fire suppression systems! The industry's easiest and most comprehensive way to connect to the PT-WEB cloud service platform. The device offers standard interfaces such as Ethernet and CAN in addition to its wireless and cellular interfaces. PT-CONNECT's End-to-End management system provides true Plug-and-Play functionality, enabling customers to monitor and manage installed fire suppression systems in construction equipment/fleets with an unmatched Out-of-the-Box Experience. PT-CONNECT enables applications ranging from simple fire suppression system/data monitoring and data logging to more advanced features such as prognostics and predictive maintenance.

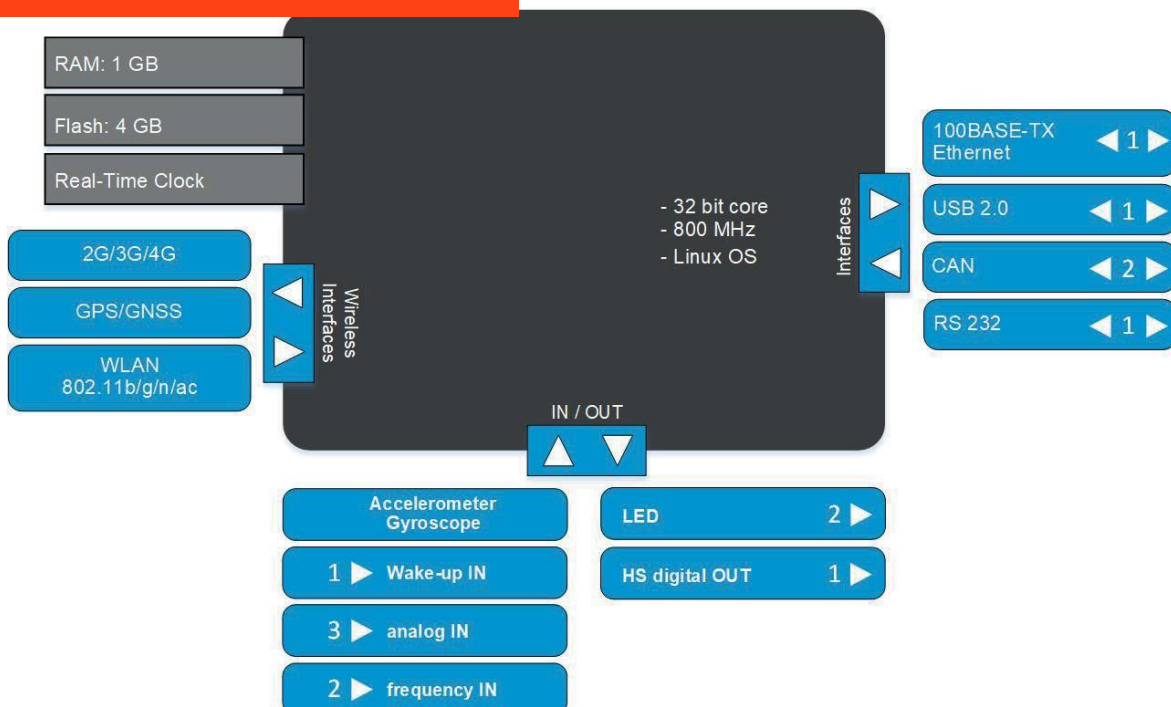
Specification

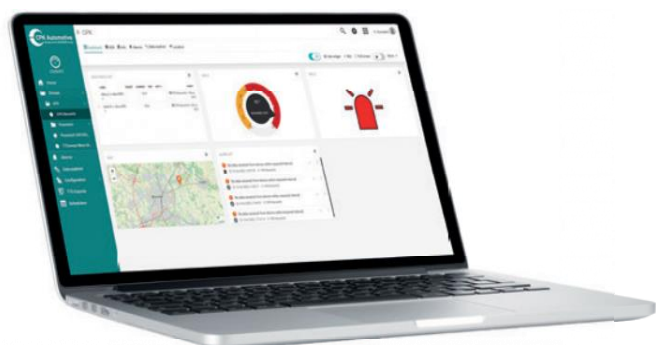
Unit dimensions	176 x 216 x 40 (With fasteners)	mm
Weight	650	g
Operating Temperature	- 40 to + 85	°C
Supply Voltage	6 to 32	V
Peak Voltage	36	V _{max}
Standby Current	3	mA _{max}
Current	1,3	A _{max}

Features

- Over-the-air updates of complete machine software
- Simple and intuitive configurable portal: no need for programming
- Create and configure alarms
- Access to data in real-time
- Create and deploy advanced analytics

Interfaces/Inputs/Outputs





CE-Mark	2014/30/EU
E-Mark	ECE-R10.05
FCC	Part 15
IC	ICES-003
EMV	ISO 11452-2 ISO 11452-4: 2005
ESD	ISO 13766
Load Dump	ISO 16750-2
Ingression Protection	EN 60529 IP67 ISO 20653 IP 6K9K
Temperature	EN 60068-2-1, -14, -78
Vibration, Shock	IEC 60068-2-64, -27

Unit's housing and connectors with dimensions

